

## Specifications SMOK NOVO 4 MINI KIT



The novo series has moved into a higher gear with the debut of novo 4 mini, which comes in ten selective colors that are pleasing to the eye. Powered by a 900mAh built-in battery, it features a max power output of 20W, bringing a smooth and rich taste. The front air-inlet ring facilitates the entry of airflow to help you achieve the optimal air intake. In addition, the LP1 coil series adopts a new leak-proof

technology

to maximize the use of juice and minimize juice leaks. Innovation keeps changing the vaping experience.

# 10 COLORS AVAILABLE



Silver Black  
Cobra

Silver Red  
Cobra

Green Blue  
Cobra

Rasta Green  
Cobra

7-Color  
Cobra

**PRISMATIC**  
IML SERIES

**REGULAR**  
IML SERIES



White  
Cobra

Black  
Cobra

Fluid  
7-Color

Fluid  
Black Grey

Red  
Stabilizing  
Wood

# THE KIT INCLUDES



### STANDARD EDITION

- 1 X NOVO 4 MINI DEVICE (900MAH)
- 1 X NOVO 4 MINI POD (LP1 MESHED 0.9Ω MTL COIL PREINSTALLED) (2ML)
- 1 X LP1 MESHED 0.9Ω MTL COIL
- 1 X TYPE-C CABLE
- 1 X USER MANUAL



### EU 2ML EDITION

- 1 X NOVO 4 MINI DEVICE (900MAH)
- 1 X NOVO 4 MINI POD (LP1 MESHED 0.9Ω MTL COIL PREINSTALLED) (2ML)
- 1 X LP1 MESHED 0.9Ω MTL COIL
- 1 X TYPE-C CABLE
- 1 X USER MANUAL



### EU STANDARD EDITION

- 1 X NOVO 4 MINI DEVICE (900MAH)
- 1 X NOVO 4 MINI POD (LP1 MESHED 0.9Ω MTL COIL PREINSTALLED) (2ML)
- 1 X LP1 MESHED 0.9Ω MTL COIL
- 1 X TYPE-C CABLE
- 1 X USER MANUAL

# Components



1 Mouthpiece

2 Pod

3 Coil Head

4 Air-inlet Ring

5 LED Indicator

6 Type-C Port

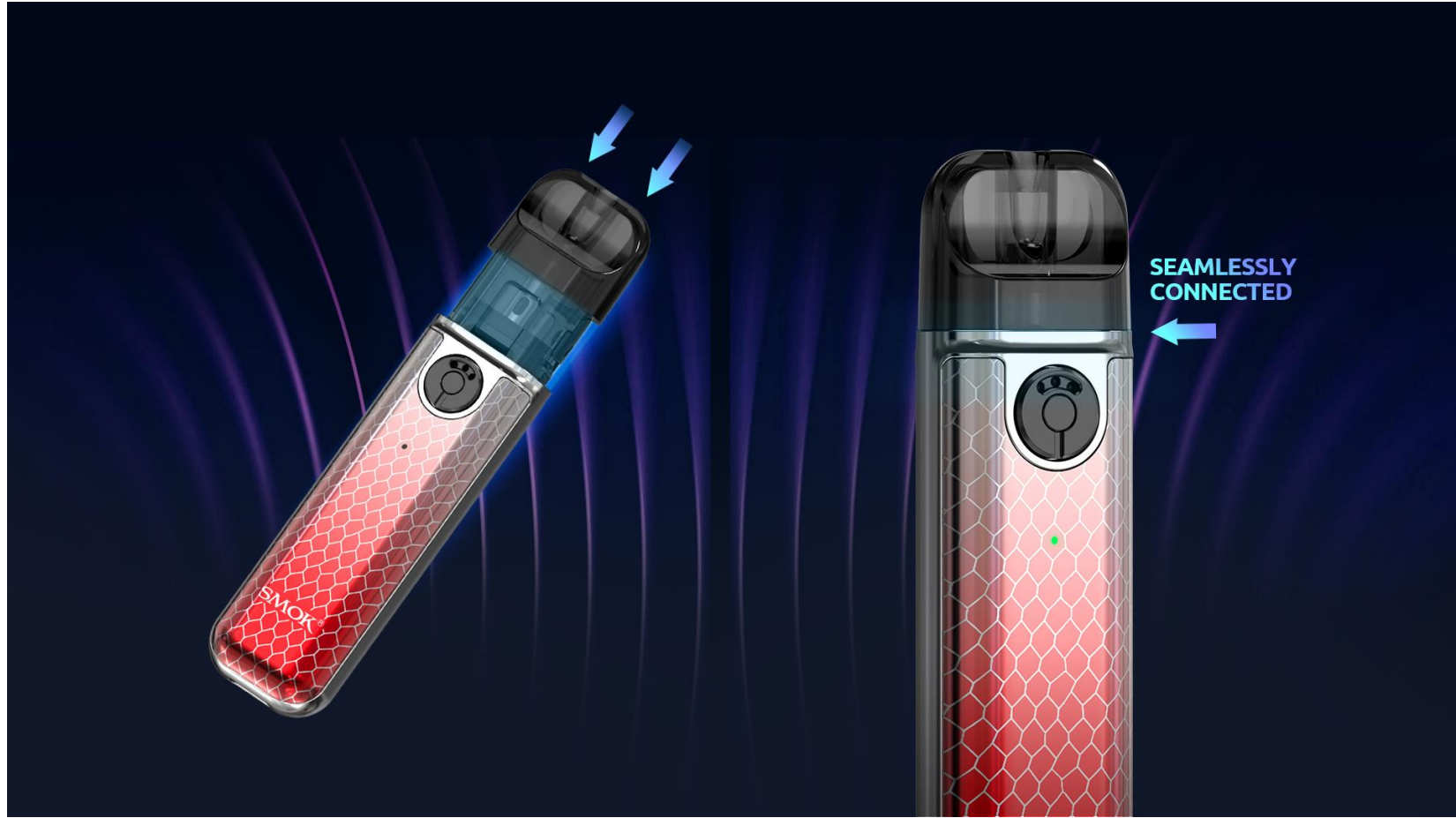
## SPECIFICATIONS

- Size: 91.6\* 24.5\* 16.0mm
- Battery Capacity: 900mAh
- Input Voltage: 3.3V-4.2V
- Output Voltage: 3.0V-4.0V
- Standby Current: <20uA (No load) < 50uA (Load)
- Charging Voltage: 5V±0.2V
- Over-charging Voltage: 4.3V±0.05V
- Over-discharging Voltage: 2.4V±0.03V
- Weight: 50g
- Power Range:
  - 12W-20W (when resistance<0.7Ω)
  - 4W-14W (when resistance≥0.7Ω)
- Resistance Range: 0.6Ω-2.5Ω
- Charging Current: Max 0.7A
- Over-charging Current: 1A±0.3A



## FLAVOR, WITHOUT GAPS

To obtain the best airflow and flavor, it is best to press the pod firmly from top to bottom so that the pod is completely sealed with the device, leaving no gaps.

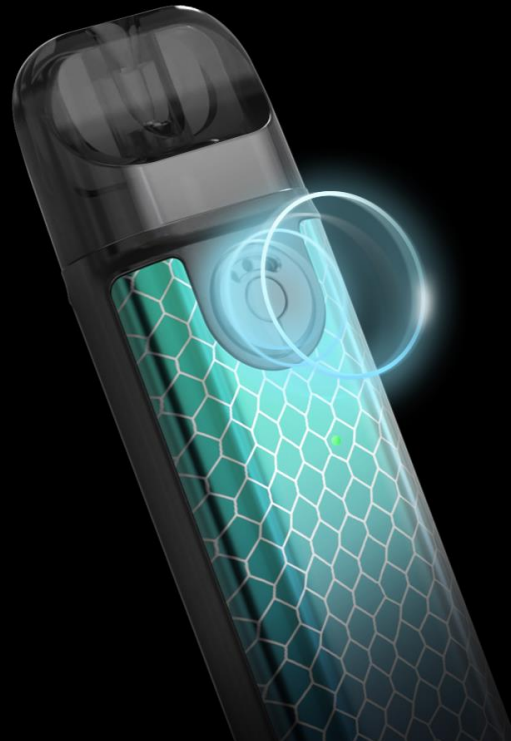


# THE COLORFUL PALETTE IN YOUR HAND

Ten iconic color schemes are carefully selected to match your daily mood, showing a low-key style while still allowing you to stand out on various occasions.







**AIR-INLET RING**

## **NEVER MISS A TERRIFIC PUFF**

Simply turn the air-inlet ring to switch between large and small airflow at will to obtain and enjoy the superb taste of every puff.



# SAY GOODBYE TO BATTERY LIFE ANXIETY

With 0.7A Type-C charging, rest assured that you enjoy the fast and safe charging.



## FLAVOR, JUST SO RIGHT

The LP1 coil series, whether the dual coil or meshed coil, seamlessly cooperates with the novo 4 mini pod to ensure the abundance of flavor and vapor in the pod.



RICH & PURE TASTE

ABUNDANT & SMOOTH CLOUDS

**IN THE  
PALM OF  
YOUR HAND**

—



## **RELIABLE ENDURANCE**

The durable 900mAh battery ensures your trusted partner is there for you day and light.

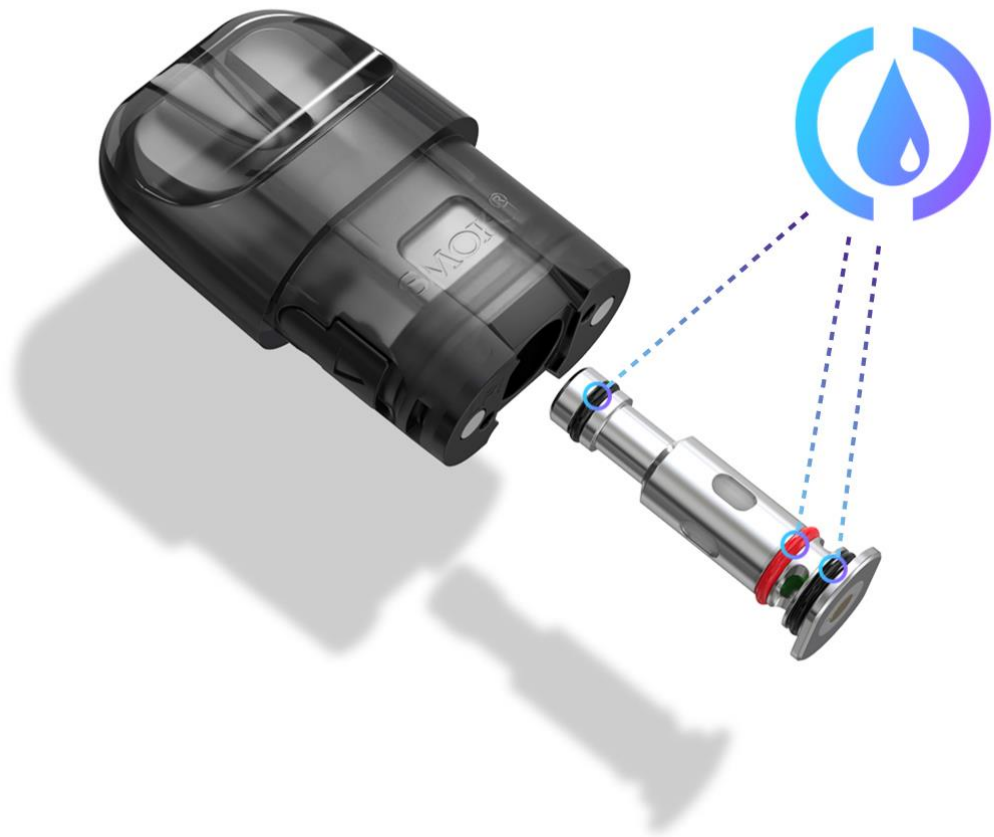


20W MAX OUTPUT



# A WISH ABOUT NO LEAKAGE ANYMORE

The coil's leakproof structure is dedicated to making the most of every drop of juice while minimizing leakage, thus avoiding messy cleaning to keep daily vaping fresh and breezy.



**3** SILICONE  
RINGS

**∞** LEAKPROOF  
EXPERIENCE

---

# LP1 COIL INTRODUCTION





**LP1 Meshed 0.9Ω MTL Coil (Included)**

Work on a leak-proof vaping experience  
Balanced heat distribution  
More delicate Flavor  
Wattage: BEST 15W



**LP1 Meshed 0.8Ω Coil (Optional)**

Work on a leak-proof vaping experience  
Meshed coil for a softer flavor  
Best: 12W



**LP1 DC 0.8Ω MTL Coil (Optional)**

Work on a leak-proof vaping experience  
Less vapor and intense flavor  
Wattage: 12-25W



**LP1 Meshed 1.2Ω Coil (Optional)**

Work on a leak-proof vaping experience  
Enlarged contact area for better atomization  
Wattage: 10-15W

# HOW TO FILL WITH E-LIQUID

Do not inhale immediately after filling the tank. Let it stand for several minutes to get the cotton completely saturated.



**This product contains nicotine which is a highly addictive substance**

Open the slot on the pod by pulling back the rubber plug.

Inject up to 2ml/ 0.07 fl oz of e-liquid into the slot and press the rubber plug back carefully and firmly.

Firmly push the pod back into the device.

Wait 2-3 minutes before vaping.